



# 2010 Annual Report



## Girl Scout Mission Statement

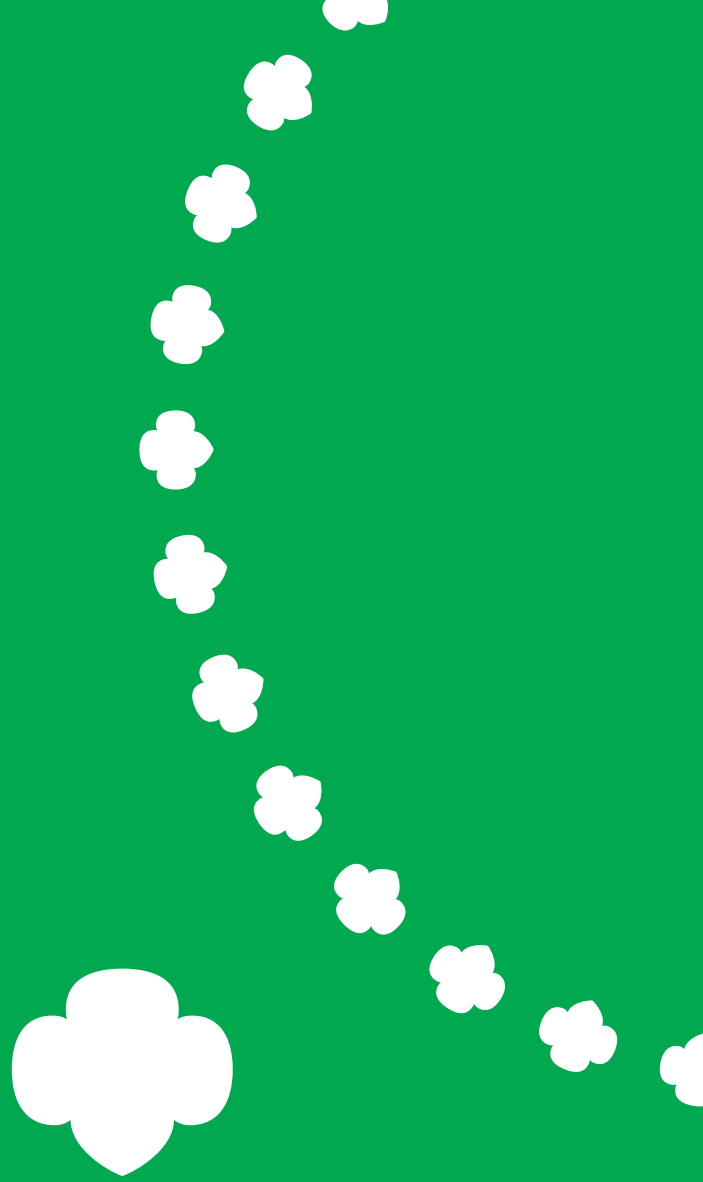
Girl Scouting builds girls of courage, confidence, and character, who make the world a better place.

## The Girl Scout Promise

On my honor, I will try:  
To serve God and my country,  
To help people at all times,  
And to live by the Girl Scout Law.

## The Girl Scout Law

I will do my best to be honest and fair,  
friendly and helpful,  
considerate and caring,  
courageous and strong, and  
responsible for what I say and do,  
and to respect myself and others,  
respect authority,  
use resources wisely,  
make the world a better place, and  
be a sister to every Girl Scout.



## We are Girl Scouts.

We help every girl discover who she can be and what she can do, wherever she chooses to put her energies.

## A Message From the President and CEO

# Embrace the Journey!

The 2009-2010 Annual Report of the Girl Scouts of Gulfcoast Florida, Inc. has been prepared for you, the community, to honor those who have inspired and supported the Girl Scout mission and the Girl Scout Movement during this past year. It is with deep appreciation that we honor the time, talents and treasures of a community that believes in the importance of Girl Scouting and that has contributed so passionately to our success.

A journey can be defined as a “trip taken away from home, a passage, expedition, or discovery.” We chose to “embrace the journey” of change this past year as an opportunity for new beginnings, a gentle balancing of the past and the present, and as an adventure for the future: to shape the destiny of the Girl Scouts of Gulfcoast Florida, Inc.

A year ago, we celebrated the retirement of Sandi Stewart after 23 years in Girl Scouting. Sandi and the various teams she nurtured developed a strong tradition of collaboration and partnerships to maximize our collective success. Thanks to all who have gone before us, we have a solid platform on which to build our future.

Sue Stewart, our new Chief Executive Officer, spent her first nine months on a new “journey” of exploration and inquiry. Traveling throughout all ten counties and also at the state and national levels, she met with and listened to girls, adult volunteers, staff and Board, United Ways, individual and corporate donors, alumnae/alumni, and grantors, and community groups. She challenged and inspired girls, staff and volunteers to focus on becoming one unified voice for girls and to focus energies on delivering the Girl Scout Leadership Experience.

As a result of various listening sessions and with Board input, Girl Scouts of Gulfcoast Florida, Inc. identified key opportunities:

- ✧ Our mission is strong and contains service to the community, a key element that distinguishes Girl Scouting from other youth serving groups.
- ✧ We have a powerful brand and positive community reputation.
- ✧ The Girl Scout Leadership Experience is a quality, outcome based program.

We also learned about some key challenges:

- ✧ Recruitment and retention of girl members and qualified adult volunteers are necessary to continue as a community treasure.
- ✧ Funding the Girl Scout Movement continues to be a critical priority.
- ✧ While Girl Scouting is widely recognized, our image is outdated. We need stronger communication and marketing efforts to educate girls, parents and the public about the value of today’s Girl Scout Leadership Experience.

Although staffing levels remained consistent between 2009 and 2010 (fewer staff than prior years), we were once again challenged to balance our expenses with reduced income. In the 2010-11 budget, we made difficult decisions to eliminate three full time, several part time positions and a variety of operating expenses in order to continue to support girl led programming and services.

Starting in 2010-11, the staff and Board have committed to implement a dynamic new process called “Strategic Learning” under the leadership of the Girl Scouts of the USA. We will create an intense focus on what matters most and determine our priorities based on key insights and a commitment to innovative business practices. We need to fully focus on the creation and implementation of a strategy that brings the best value to our **girls** and our community in an environment of limited resources.

Because we believe that all girls benefit from Girl Scouting and the Girl Scout Leadership Experience, we welcome you to join us as we imagine a new generation of leaders who will lead in new ways, who seek out the work that needs doing in the world and who bring boundless energy to every challenge. They are today’s Girl Scouts.

Linda Getzen  
President,  
GSGCF

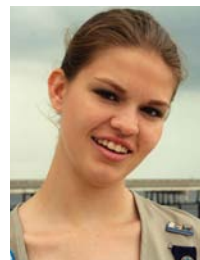


Susan R. Stewart  
Chief Executive Officer,  
GSGCF

## Girl Recognition

- ✦ Honored 259 girls for their accomplishments in Girl Scouting at an annual recognition event.
- ✦ Honored 9 girls for earning the Girl Scout Gold Award – the highest honor in Girl Scouting:  
Jennifer Carlson, Lindsay Cobb, Laurabeth Goldsmith, Jessica Gross, Frances Perry, Amanda Sanford, Stefani Sanford, Caroline Templeton, and Chelsea Torres, .
- ✦ Honored 59 Girl Scout Cadettes for earning the Girl Scout Silver Award.
- ✦ Honored 92 Girl Scout Juniors for earning the Girl Scout Bronze Award.
- ✦ Awarded 6 graduating seniors with \$1,000 college scholarships for academics, service to the community and involvement in Girl Scouts.

## 2010 Girl Scout Gold Award Recipients



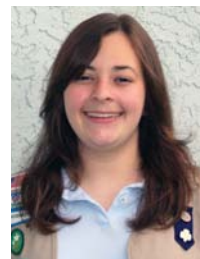
Jennifer Carlson



Lindsay Cobb



Laurabeth Goldsmith



Jessica Gross



Frances Perry



Amanda Sanford



Stefani Sanford



Caroline Templeton



Chelsea Torres

The Girl Scout Gold Award is the highest award that a Girl Scout 14-18 may earn. Someone once described the Girl Scout Gold Award as being "what you really want to be remembered for" in Girl Scouting.

For many, the leadership skills, organizational skills, and sense of community and commitment that come from "going for the Gold" set the foundation for a lifetime of active citizenship.

## Healthy Girls Initiative

"In 2009-2010, Healthy Girls Initiative focused on two endeavors: delivering the Uniquely Me! self-esteem strengthening program to 5,000 girls throughout council and the 2010 Holistic Obesity Prevention Endeavor (HOPE) Task Force. The HOPE Task Force was comprised of 7 Girl Scout Cadettes and Girl Scout Seniors who developed a community event called a "Health Circus" that attracted 49 girls and their families. Girls on the HOPE Task Force worked with three Pathway Volunteers over four months prior to the Health Circus to learn and apply the Open Space method of community engagement to their event. Healthy Girls Initiative was made possible with funding from Gulf Coast Community Foundation of Venice and United Healthcare HEROES.



## Forever Green

Girl Scouts Forever Green was implemented council wide with 30 troops participating in the cookie box recycling project. Many more troops completed environmental projects focused around the environment including butterfly and pizza gardens, creating recycling bins for camp, and much more. The culminating event for the recycling project, Forever Green Family Fun Day, was a huge success with over 300 people in attendance participating in 26 educational booths provided by community organizations and Girl Scout groups.

A \$5,000 grant from GSUSA and the US Forest Service enabled the development of Okeelanta Island at Camp Honi Hanta. Working with volunteers from United Technologies Corporation – Fire and Security, New College, the Disney Give A Day, Get A Day promotion and various troops, a trail was cleared the entire length of the island. Picnic tables were built on the island providing a destination for hiking and paddling. While not a true island, portage ramps were constructed so that girls can paddle all the way around Okeelanta Island. Additionally, all invasive species were removed from the island including Caesar Weed and Brazilian Pepper.

### Our Mission

Girl Scouting builds girls of courage, confidence and character who make the world a better place.

Courage by exploring new adventures. Confidence by discovering her abilities and character by shaping her values. Girl Scouting is where a girl returns those gifts by making the world a better place.



# Membership, Volunteerism and Program

- ❖ Provided the Girl Scout Leadership Experience (GSLE) for 10,578 girls, 731 less than last year.
  - ◆ 40% were from diverse origins with a 6% market share in the Hispanic community.
  - ◆ 5,930 girls (56% of total membership) in the traditional troop pathway.
  - ◆ 1,846 girls in community troops led by staff.
  - ◆ 1,450 girls in the event pathway .
  - ◆ 1,290 girls in the series pathway.
  - ◆ 62 girls in the camp pathway.
- ❖ Retained 47% of girl members from the previous year.
- ❖ Awarded \$83,014 in financial assistance to 5,537 girls and 214 adults through various grants, gifts, and troop donations.
- ❖ Provided 3,254 girls access to 110 council sponsored event, series, travel and environmental education pathways held in all six regions.
- ❖ Served 180 girls in a resident camp experience and 209 girls enjoyed a day camp experience.
- ❖ Demonstrated girl attainment of leadership skills with the following outcomes:
  - Discover – 87%
  - Connect – 85%
  - Take Action – 93%
- ❖ Provided On-Demand outdoor adventure programs to 500 girls.



In Girl Scouting, everything centers around the girl: activities are girl led, providing the opportunity for girls to learn by doing in a cooperative and fun learning environment.

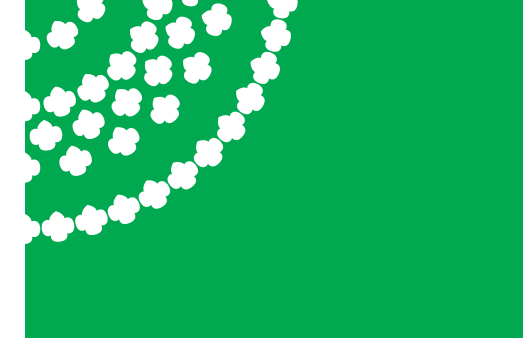


## Our Vision

Our vision is to be the premier leadership experience for girls in grades K-12. The Girl Scout Leadership Experience has identified three keys to **leadership**: girls **discover** themselves and their values, **connect** with others, and **take action** to make their communities and world a better place.



- ❖ Partnered with more than 200 collaborators to offer the Girl Scout Leadership Experience through outstanding, contemporary council sponsored programs.
- ❖ Obtained ACA accreditation for Camp Honi Hanta. ACA accreditation indicates that a camp is engaging in best practices that go beyond health department or state licensing requirements to establish practices that are recognized as the highest standards established for camps.
- ❖ Registered 3,190 adults for the 2010 membership year, a 1.5% increase compared to 2009 with 12% from diverse origins, a 2% increase from last year.
- ❖ Retained 66% of adult members from the previous year.
- ❖ Provided leadership and outdoor skills training to 1,005 adults.
- ❖ Implemented the very popular *Troop Adventures with Your Girls* providing girls and volunteers the opportunity to train and camp together.
- ❖ Introduced region events to kick-off the new membership year. Over 480 volunteers attended sessions on GSLE & Journeys, GSUSA brand updates, e-Biz, Family Support Plan, governance, and Fall Product Sale.
- ❖ Presented national and council recognitions to 23 adults.

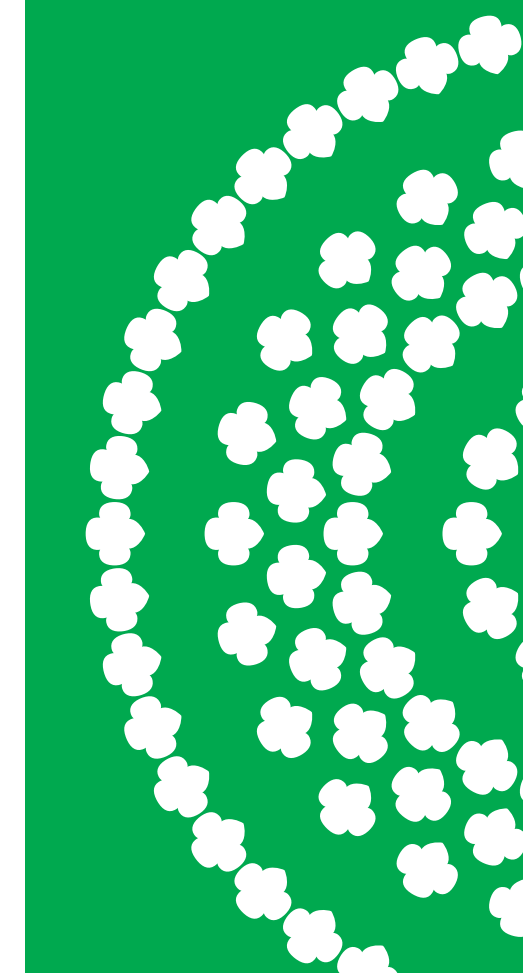


One girl can make a difference.  
Girls together can change the world!



Appreciation Pin recipients

- ❖ Thanks Badge II: Sandi Stewart, Florence Stephens
- ❖ Thanks Badge: Michael Smith
- ❖ National Honor Pin: Nancy Moss, Peyton Gassaway
- ❖ National Appreciation Pin: Marie Graziosi, Terri Plumlee, Cathy Berna, Barbara Brunner, Jeannette Garia,
- ❖ Green Angel Award: Beverly Beishline, Shari Shifrin, Natasha Sorrell, Tiffany Timms, Kathy Trevisani, Wendy Warner, Debbie Wood, Amy Calcagino, Denise Lapergola, Laura Lofton, Laura Long, Denise Lovett, Judy Palino, Lisa Radno



# Product Sales

Through the Girl Scout product sales, girls have the opportunity to fund their Girl Scout experiences while also learning essential business skills like goal setting, decision making, money management, people skills, and business ethics. Girl Scout troops use product sales proceeds to finance activities, service projects, travel, and leadership opportunities.

## 2010 Girl Scout Cookie Program

- ✦ Sold 951,481 packages of Girl Scout cookies, representing an increase of 7% over the previous year.
- ✦ 4,745 girls participated in the Cookie Program, selling an average of 200 packages per girl.
- ✦ 1,550 cases (18,600 packages) were donated to the Mints for the Military program, and the cookies were delivered in June to the military service personnel stationed in Guantanamo Bay, Cuba.
- ✦ \$570,888 in troop proceeds supported individual troops' activities, trips, service projects, and other expenses.
- ✦ Recognized 44 girls for selling 1,000 or more packages of Girl Scout cookies.

## 2009 Fall Product Sale

- ✦ 1,405 girls participated in the Fall Product Sale, representing 65% of the eligible girl membership.
- ✦ Generated total sales of \$173,077 throughout the Fall Product Sale, including \$112,706 of nuts and candy, and \$60,371 of magazine subscriptions.
- ✦ Recognized 23 girls for Fall Product Sales totaling \$500 or more.

# Property

## Council-Owned and Maintained Facilities

Searcy G. Koen Regional Girl Scout Campus of Girl Scouts of Gulfcoast Florida, Inc., Sarasota, including:

- Lorraine G. Gunn Council Headquarters
- Gulfcoast Event and Conference Center of Girl Scouts of Gulfcoast Florida, Inc.
- William G. and Marie Selby Wetlands

Service Center in Fort Myers

- Camp Honi Hanta, Bradenton
- Camp Caloosa, North Fort Myers
- Bradenton Girl Scout House
- Sebring Girl Scout House
- Venice Girl Scout House
- Arcadia Girl Scout House
- Charlotte Girl Scout House
- Collier Girl Scout House

- ✦ Managed and maintained all properties for the safety and well being of users with an emphasis on environmental impact and stewardship.
- ✦ Resolved delays and legal issues to implement plans to "get girls in the pool" at Camp Honi Hanta in 2011.
- ✦ Provided hospitality, meeting and event space throughout all council properties for 47,705 people (girls, volunteers and the community at large).
- ✦ Finalized permitting requirements at Camp Caloosa to initiate the Forest Stewardship Management Plan. Girl Scouts, their families, volunteers and other users will experience quality programs and a diverse forest resource and natural habitat in 2011.

# Fund Development & Communications

Every donation that is made throughout the year is a lasting investment in the lives of our girls. We are truly thankful to foundations, corporations, individuals, and families who have chosen to support the mission of Girl Scouting. Partnering with our communications department through a variety of public relations vehicles, we continually informed the community of the significant achievements of Girl Scouts and volunteers, funding opportunities, and the outstanding events and programs offered.

- ✦ Received \$177,000 from local United Ways.
- ✦ Accepted \$47,698 through the Annual Giving Campaign.
- ✦ Raised \$34,948 from fundraising events.
- ✦ Obtained \$7,863 through the Family Support Plan from Girl Scout troops and their families.
- ✦ Acquired \$122,150 in grant and foundation funding for numerous specific projects and general funding needs.
- ✦ Implemented the refreshed Girl Scout branding.
- ✦ Updated and reintroduced the monthly Cybernews e-newsletter.
- ✦ Published The Girl Scout Circle, a new donor/volunteer newsletter.
- ✦ Reached out to our members through various Social Media outlets.
- ✦ Initiated the process of introducing a new contemporary website for 2011.

## WHAT DID YOU DO TODAY?

Share your Girl Scout experiences on Facebook. Find us at Girl Scouts Gulfcoast Florida, Inc.



# 2010 Special Events

## Collier County Cook-ie-Off



Executive Chef Brian Roland of M Waterfront Grill awarded for "Innovative Girl Scout Cookie Napoleon."

### Committee Members

- David Alleman
- Barbara Church
- Bonny Eads Dery
- Amy Valentine
- Mike Valentine

## Charlotte County Cook-ie-Off



Chef Tony Edgar of Dillard's Inc. placing first for his outstanding "Samoan Baklava" dessert.

### Committee Members

- Cheryl Bowman
- Deb Deacetis
- Mary Dishar
- Dr. Cecelia Hill
- Patricia Weston
- Patricia Zuzolo

## Denim & Pearls



Pictured from left: Terry and Chris Behling, Mel Klein, Betsy Benac, Rae Dowling, and Bob Benac.

### Committee Members

- Betsy Benac
- Jodi Egger
- Larry Boersma
- Peyton Gassaway
- Richard Cyphers
- Nancy Gorski
- Rae Dowling
- Karen Joy Klein
- Rochelle Dudley
- Caroline Tanner

## Event Sponsors

- Bradenton Herald ♦ First Bank ♦ FPL ♦ Gold Coast Eagle Distributors ♦ Kohl's ♦ LECOM University  
 Little Brownie Bakers ♦ Neal Communities ♦ Phyllis Siskel ♦ Publix Super Markets Charities, Inc.  
 Sea Breeze Wines ♦ State Farm ♦ Williams Parker Harrison Dietz & Getzen

# Welcome to the Girl Scout Leadership Experience

DISCOVER

+

CONNECT

+

TAKE ACTION

=

# LEADERSHIP

## 3 KEYS TO LEADERSHIP

### DISCOVER:

*Understand themselves and their values and use their knowledge and skills to explore the world.*

1. Girls develop a strong sense of self.
2. Girls develop positive values.
3. Girls gain practical life skills.
4. Girls seek challenges in the world.
5. Girls develop critical thinking.

### CONNECT:

*Care about, inspire, and team with others locally and globally.*

1. Girls develop healthy relationships.
2. Girls promote cooperation and team building.
3. Girls can resolve conflicts.
4. Girls advance diversity in a multicultural world.
5. Girls feel connected to their communities, locally and globally.

### TAKE ACTION:

*Act to make the world a better place.*

1. Girls can identify community needs.
2. Girls are resourceful problem solvers.
3. Girls advocate for themselves and others, locally and globally.
4. Girls educate and inspire others to act.
5. Girls feel empowered to make a difference in the world.



# Girl Scouts of Gulfcoast Florida, Inc. Income and Expenses

## Statement of Activities For the Year Ended September 30, 2010

Girl Scouts of Gulfcoast Florida, Inc. is a Florida not-for-profit corporation with the 501(c)(3) status under the Internal Revenue Code. The Gulfcoast council serves ten counties and is chartered by Girl Scouts of the USA. We appreciate the support received from the following United Ways: Manatee; Central Florida (Hardee and Highlands); Sarasota (DeSoto); South Sarasota; Charlotte; Lee, Hendry, and Glades; and Collier.

### Income

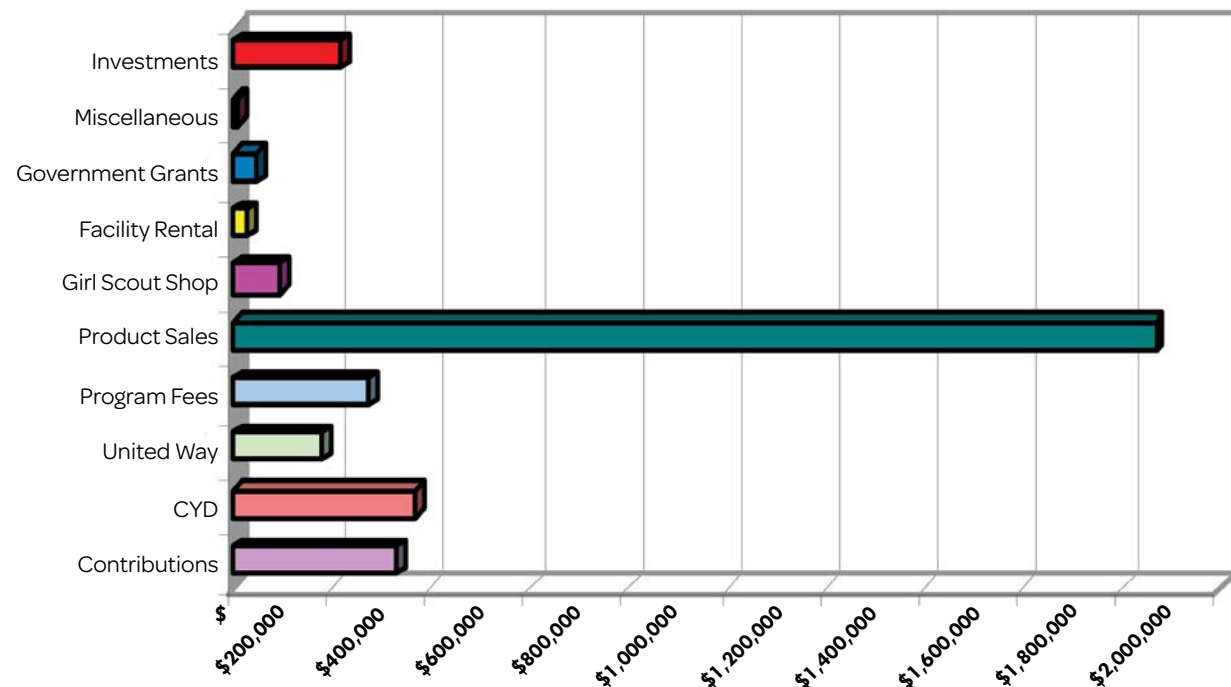
CYD .....	\$ 372,782
United Ways .....	177,000
Contributions and Events .....	331,838
Government Grants .....	50,853
Program Fees .....	274,431
Facility Rental .....	32,666
Shop Income .....	94,498
Investment Income/(Loss) .....	218,691
Miscellaneous .....	13,281
Product Sales .....	1,867,260

**Total Income ..... \$3,433,300**

### United Way Funding By County

	Received
Manatee .....	\$ 5,005
Hardee .....	10,506
Highlands .....	9,875
Sarasota .....	26,271
South Sarasota .....	2,775
DeSoto .....	0
Charlotte .....	8,068
Lee .....	68,000
Hendry/Glades .....	4,000
Collier .....	42,500

**Total ..... \$177,000**



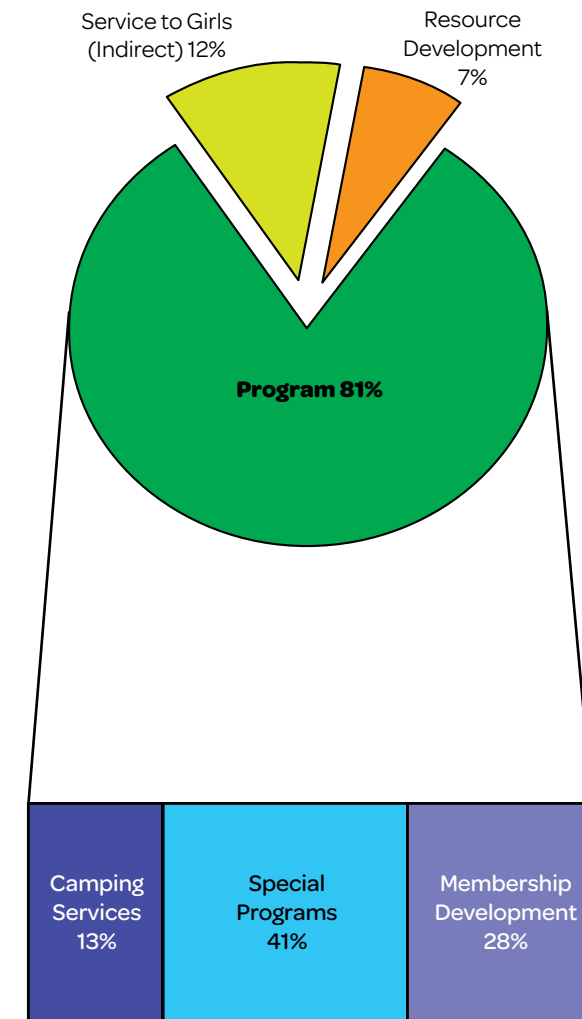
### Expenses

Membership Development .....	\$ 1,086,726
Special Programs .....	1,619,534
Camping Services .....	533,351
Service to Girls (Indirect) .....	494,717
Resource Development .....	269,366

**Total Expenses ..... \$4,003,694**

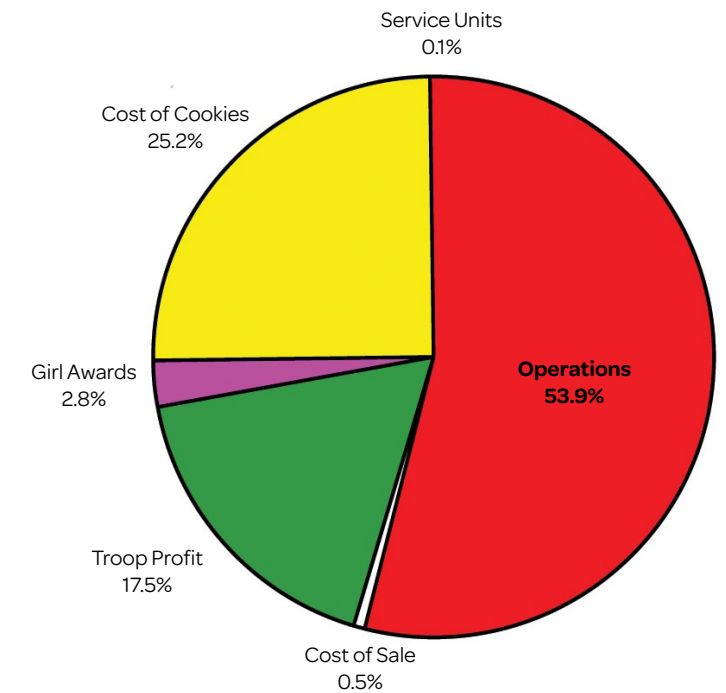
**Net Results ..... \$(570,394)**

Note: Deficit of \$278,334 before Depreciation of \$434,970 and Investment Realized and Unrealized Gain of \$142,920.



### How the Cookie Crumbled

Cost of Cookies .....	\$ .88
Cost of Sale .....	.02
Troop Profit .....	.60
Girl Awards .....	.10
Service Units .....	.01
Operations .....	1.89
<b>Total Price of Cookies ..... \$3.50</b>	



# Donors

Thank you to our many generous supporters!

## Annual Gifts

### Leaders \$10,000 and Up

Getzen Family Charities, Inc.

### Trail Blazers \$5,000 to \$9,999

The Esther M. Mertz Charitable Trust  
Mr. and Mrs. Skip J. Potter  
Mrs. Phyllis Siskel  
Mrs. Kappie Spencer

### Ambassadors \$2,500 to \$4,999

Ms. Linda Getzen  
Mr. and Mrs. Michael Valentine

### Adventurers \$1,000 to \$2,499

Ms. Dianne Belk and Mr. Larry Calder  
Mrs. Cynthia Downey  
Drs. Kitty and Henry Heusner  
Mrs. Myrtle Lawrence  
Mrs. Ellen Lojinger  
Ms. Christina Ottman  
Ms. Peggy Simone  
Mr. and Mrs. Don Stewart  
Ms. Susan R. Stewart

### Lifesavers \$500 - \$999

Dr. Bonny E. Dery  
Mrs. Beverly Duff  
Dr. and Mrs. Thomas Carrasquillo  
Ms. Betty Flora, The Flora Family  
Foundation of Fidelity Brokerage  
Services, LLC  
Mr. and Mrs. Alfred Goldstein,  
The Alfred and Ann Goldstein  
Foundation, Inc.  
Richard Gonnering  
Ms. Debbie McDowell-Tate  
Ms. Susan Patton  
Mrs. Anita Scott

### Campers \$100 to \$499

Mr. Rock Aboujaoude,  
Rock Enterprises, Inc.  
Al Purmort Insurance  
Mr. and Mrs. David Alleman  
Ms. Reneé Armstrong  
Ms. Doris J. Atteberry  
Mr. and Mrs. Dan Bailey, Jr.  
Mr. and Mrs. Charles D. Bailey, Jr.  
Ms. Genevieve S. Bailey  
Ms. Betsy Benac  
Mr. Gilbert B. Bosse  
Mrs. Melissa M. Burtless  
Mrs. Mollie C. Cardamone

Ms. Darleen Chase  
Mr. and Mrs. William Coen  
Ms. Barbara Coons  
Joe L. Davis, Groves & Ranch  
Mrs. Mary E. Disher  
Ms. Rae Dowling  
Mrs. Nancy K. Fassler  
Ms. Nancy Ferraro  
Mr. and Mrs. Peter Forkgen  
Mrs. Lynn Frankel  
Mrs. Helen F. Gifford  
Mr. and Mrs. Tom Gorksi  
Alexandra Gornik  
Mrs. Marie Graziosi  
Ms. Carolyn Griffin  
Mr. and Mrs. Caleb Grimes  
Ms. Elaine F. Gregg  
Mrs. Terri Halbach  
Ms. Charlotte Hartwell  
Mr. and Mrs. Jack Hennebery  
Ms. Joan Hill  
Ms. Marjorie J. Joder  
Ms. Alison Kelly  
Mrs. Sherry Kessel  
Kiwanis Club of  
Lehigh Acres Foundation, Inc.  
Ms. Marie Knasiak  
Mr. and Mrs. Edward O. Koch Jr.  
Ms. Mary M. Koessler  
Mr. and Mrs. Justin Land  
Mrs. Patricia A. Mahaney, EA  
Ms. Maurine Martin  
Ms. Ann M. Mathews  
Mr. and Mrs. David McClain  
Mrs. Lydia McIntire  
Dr. and Mrs. Robert Meli  
Mr. and Mrs. Alfred A. Miller  
Mr. and Mrs. Terry Miller  
Mrs. Jeanne Monaghan  
Ms. Leslie A. Moore  
Ms. Nancy Myers  
Mrs. Cathleen Nadeau  
Ms. Marianne Owen  
Ms. Stephanie Person  
Mr. John G. Putta  
Patricia Ramthun  
Mr. and Mrs. Peter Radno  
Mrs. Gloria Rapport  
Ms. Betty Rittgers  
Mr. John Robinson  
Dr. and Mrs. Sterling Ronk  
Sarasota Chapter of  
Kappa Delta Alumnae Association

Sarasota Manatee NOW -  
National Organization for Women  
Ms. Jennifer M. Saslow  
Mr. and Mrs. Peter Shepherd  
Mrs. Anne Simpson  
Barbara Van Essen  
Mr. and Mrs. David Waite  
Ms. Kathleen R. Walker  
Mr. and Mrs. Albert J. Webel  
Ms. Patrice Weston  
Cathy Wilson  
Ms. Christine B. Yekel

### Friends \$25 to \$99

Dr. and Mrs. Michael Alpern  
Ms. Peggy Becerra  
Karen Bogus  
Ms. Yvonne Bras  
Mr. and Mrs. William Brankin  
Ms. Karen "Kiki" Brewsaugh  
Mrs. Natalie Brown  
Charla, Celina and Richard Burchett  
Ms. Lee Burns  
Byron Family Corporation,  
Mrs. E. Lee Byron  
Kathleen M. Carol  
Mr. and Mrs. H.L. Clemmons  
Ms. Nancy C. Crawford  
Marian S. Dailey  
Mr. and Mrs. Walt Deptula  
Mr. and Mrs. L. Victor Desguin  
Mr. and Mrs. Edgar Dickson  
Ms. Dolores Donnelly  
Ms. Elaine Enoch  
Megan Fasig  
Mr. and Mrs. Jeff Francoletti  
Mrs. Amy Gainey  
Mr. Scott Gearity  
Ms. Irene C. Giniat  
Ms. Deborah Gittes  
Glades Co. Woman's Club  
Mr. Stanley Goldsmith and  
Ms. Debra Van Praag  
Ms. L. Kim Gradwell  
Mr. and Mrs. Charlie Hall  
Ms. Roberta Hamilton  
Ms. Mildred M. Headdy  
Ms. Catherine Hook-Shea  
Mrs. Bonita L. Horne  
Mrs. Eula R. Jorgensen  
Mrs. Kathryn Kermod  
Mrs. Edith Kingsley  
Mrs. Julie Krueger

Mr. and Mrs. Dan Kumarich  
Mrs. Kathy Leydon-Conway  
Dr. and Mrs. Joseph J. Maggiore,  
The Joseph J. Maggiore Revocable Trust  
Yolanda Mancha  
Dr. and Mrs. Durfee Marshall  
Mr. David Martin and Mrs. Jo Fenn-Martin  
Ms. Melissa Mason  
Ms. Isabel McDuffie  
LT. Col. Tony and  
Mrs. Mary Beth Mediavilla  
Ms. Jacqueline Middleton  
Ms. Josephine Morse  
Mrs. Lorraine B. Mueller  
Ms. Betty Lou Murphy  
Mr. Harry Neal  
Ms. Kathleen O'Leary  
Mr. David J. Pape  
Mr. and Mrs. Leonard Peck  
Ms. Belinda Perry  
Dr. and Mrs. David Poeltl  
Dr. James M. Pyle, III  
Dr. and Mrs. Murray Renfrew, M.D.  
Mr. and Mrs. James Ritchey  
Mrs. Staci Rutt  
Dr. George A. Sanchez, DMD  
Ms. Edwina Sanders  
Mr. and Mrs. Johnson Savary  
Mr. and Mrs. Charles R. Schumacher  
Seminole Tire Co., Inc.  
Mrs. Ann M. Shelton  
Mr. and Mrs. Richard Smith  
Mr. and Mrs. Jay Soukup  
Ms. Anne G. Stinnett, P.A.  
Ms. Jane Sturges  
Ms. Betty Sulfridge  
Mr. and Mrs. Adrian Swain  
Mrs. Patricia K. Taylor  
Ms. Nancy Turner  
Ms. Evelyn S. Turner  
United Way of Southeastern Pennsylvania  
Mrs. Margarete Van Antwerpen  
Mrs. Charlotte G. Ventola  
Ms. Jeanne Wade  
Dr. and Mrs. Charles Carl West  
Mr. and Mrs. Harold W. Wilder  
Ms. Gloria Wood  
Hon. and Mrs. W. Wayne Woodward  
Mrs. Corinne Wright  
Ms. Jennifer Yahraus  
Ms. Liz Yerkes

## Special Contributions - Individuals

We thank the following individuals for fulfilling our **wish-list** needs and providing special, in-kind gifts.

Dianne Belk and Larry Calder  
Kitty Heusner  
Gary Leatherman

Tina Ottman  
Nancy and Skip Potter  
Bernard Shapiro



*Girl Led... Learning By Doing*

## Endowment Gifts

Ms. Peggy Simone

*Thank You!*

If we have omitted your name, improperly cited it, misspelled it, or failed to place it in the proper category, please accept our apology. Please call 941-921-5358 ext. 307 and let us know so we can make any needed corrections to our records. Thank you for your continued support of Girl Scouts of Gulfcoast Florida, Inc. and the girls we serve.

## Grants and Foundations

The following individual, corporate, and civic organizations and foundations awarded funding requests to support programs, capital needs, and general operations.

The Franklin G. Berlin Foundation  
of Northern Trust Bank  
The Edward E. and Lillian H. Bishop Foundation  
Cape Coral Community Foundation  
Cape Coral Elks Lodge # 2596  
Cape Coral Kiwanis Foundation  
Collier Community Foundation  
The Community Foundation of Sarasota County  
The Community Foundation of Sarasota County  
from the Norman & Phyllis Siskel Advisory Fund  
District School Board of Collier County  
Fraternal Order of Eagles #4028  
GoodSearch  
Gerald A. & Karen A. Kolschowsky Foundation, Inc.  
Girl Scouts of the USA  
Forever Green Project  
Healthy Girls Initiative  
Uniquely Me!  
US Forestry Service – Linking Girls to the Land  
VIVA  
Gulf Coast Community Foundation of Venice  
Gulfcoast South AHEC, Inc.  
The Daniel R. and Anne M. Harper Foundation, Inc.  
Naples Woman’s Club, Inc.  
The Mary E. Parker Foundation  
Publix Super Markets Charities, Inc.  
The Rotary Club of Bonita Springs Foundation  
The Rotary Club of Sarasota Bay Foundation  
William G. and Marie Selby Foundation  
Southwest Florida Community Foundation  
Tice Elementary School  
UHC Heroes Project Hope Grant  
Weichel Family Fund of the Manatee  
Community Foundation  
Wilson-Wood Foundation, Inc.

## Corporate Giving

### In-kind and Give Back, Matching Gift, and Volunteer Hour Match Programs

Bank of America  
Bank of America Matching Gifts  
Chili’s Grill & Bar Restaurants  
First Bank  
Groutmasters of Manasota, Inc.  
Illinois Tool Works Foundation  
Regions Bank  
Sam’s Club  
State Farm Foundation  
United Technologies Corporation – Fire and Security  
Verizon Foundation  
Walmart Foundation

## Tribute Fund

*In memory of Bill Brown, husband of Francine Brown*

Mr. and Mrs. Jules Green      Marsha and David Alleman  
Francine Brown                  Drs. Kitty and Henry Heusner  
Jenny L. and Sterling Ronk      Sandi and Don Stewart

*In memory of Marian Carroll*

Ms. Elizabeth Tyner

*Celebrating Creativity Problem Solving Institute*

Mrs. Anita Scott

*In honor of Marion Coburn, former leader, and Freddie King, former co-leader (1965-1969) St. Johnsbury, VT*

Mr. and Mrs. Ralph E. Jackman

*In honor of the Elinor Crawford Scholarship Fund*

Ms. Elisabeth Ethal

*In memory of Patricia Ann DiMeglio, board member of the Baltimore council*

Mr. Michael B. DiMeglio

*In memory of Eve O’Neill*

Drs. Kitty and Henry Heusner

*In memory of Barbara H. Lane*

Mrs. Deborah L. Wilbur

*In memory of John D. Miller*

Mrs. Betty J. Webb

*In honor of Kari Mitchell*

Patricia K. Taylor

*In memory of Ellie Merola*

Mr. John J. Merola

*In honor of Linda Mustric*

Ms. Ruth Wilson

*In honor of Pat and Frank O’Day*

Dr. Mary Patricia O’Day and Dr. John Grabowski

*In memory of Darlene Puckett*

Barbara and David Donnelly      Mary Ellen Felker  
Ruth and William Getzen          Elaine F. Gregg  
Isabel and Randy Norton          Marie Putnam  
Naoma Rhyne                          Gayle and Bernard H. Salmon  
Mrs. Grace Tyner

*In memory of Ralph Quigley*

Mrs. Mazie E. Quigley

*In honor of Martha Spivey*

Mrs. Hope Stephenson

*In honor of Sally Trout and Tom Ross on their wedding*

Sindy and Mike Carr

*In honor of all volunteer Girl Scout leaders*

Mr. and Mrs. Pete Kelley

*In memory of Sammy Wyas*

Phyllis Crews

## Cook-ie-Off Donors

Mrs. Marsha Alleman  
Anonymous (13)  
Ms. Peg Bailey  
Mrs. Wendy S. Barton  
Mr. and Mrs. Sam Becker  
Mr. and Mrs. Harry Bigelow  
Ms. Kim Bos  
Ms. Betty Brisky  
Ms. Bonnie Brisky  
Ms. Pat Cargill  
Mr. and Mrs. Rudy Castro  
Ms. Sushila Cherian  
Mrs. Theresa Chipman  
Dr. and Mrs. Cary Church  
Mr. and Mrs. H.L. Clemmons  
Mr. and Mrs. John Conroy  
Mr. Timothy Conroy  
Mr. and Mrs. Eric Crews  
Dr. Bonny E. Dery  
Mr. L. Victor Desguin  
Mr. and Mrs. James Disher  
Mr. Charles W. Dodson  
Ms. Sherry Drake  
Mrs. Dawn Finger  
Mrs. Marjorie Fitzgerald  
Ms. Christina Forbes  
Mr. and Mrs. Curt Fullom  
Ms. Jennifer Gerali  
Dr. Pamela Gerali

Ms. Norma Hage  
Ms. Joanne L. Halstead  
Mr. and Mrs. Phillip Hartung  
Mr. and Mrs. Norm Haustein  
Ms. Sharon Helphenstine  
Mrs. Dorothy W. Henshaw-Sanders  
Dr. and Mrs. Terry Van Der Heyden  
Dr. Cecelia Hill  
Ms. Joan Hill  
Dr. and Mrs. Harry Hollinger  
Homer Helter’s Antique Military Mall LLC  
Ms. Elizabeth Hudak  
Ms. Marlis Kilps  
Ms. Suellen Maxwell  
Ms. Diane McAlear  
Mr. Don McCormick  
Mrs. Susan Malvik  
Dr. Stephen and Amy Moenning  
Mr. and Mrs. John Mueller  
Ms. Ruth Nash-Williams  
Ms. Jill Overbey  
Ms. Trudy Overbey  
Ms. Barbara J. Perkins  
Mrs. Mercedes Puente  
Ms. Lisa Radno  
Ms. Vicki Rajab and Ms. Katie Rajab  
Ms. Kelly Richards  
Mrs. Shirley A. Ritchey  
Ms. Millie Rosenfield

Mr. and Mrs. Edward Ruley  
Ms. Pat Sanderson  
Mrs. Rhona Saunders  
Ms. Marianne Schenkel  
Mr. and Mrs. Friedrich Schiller  
Mrs. Garnette Scholl  
Ms. Jackie Scott  
Ms. Dagmar Shepherd  
Ms. Marti Shuster  
Ms. Patricianne B. Slaughter  
Mrs. Aubrey Stadler  
Mr. Rob Stephenson  
Ms. Jane Sturges  
Summers, Horner, Daughtrey & Westby  
Ms. Ann Sweet  
Mrs. Nancy Szafranski  
Mr. and Mrs. Stanislaw Szybalski  
Ms. Peg Thompson  
Ms. Pat Trowbridge  
Mr. and Ms. Rick Turner  
Ms. Yvonne K. Urban  
Mr. and Mrs. Michael Valentine  
Mr. Frank Van Essen  
Mr. and Mrs. Kenneth Vida  
Ms. Leslie Walsh  
Mr. and Mrs. Charles Weinrich  
Mr. and Mrs. Bill Weller  
Dr. Elaine Witten  
Ms. Liz Yerkes  
Ms. Patricia Zuzolo

## Endowment . . . In Honor of Sandi Stewart’s Retirement

Thank you to **The Community Foundation of Sarasota County** for sponsoring Sandi Stewart’s retirement party.

Mrs. Pat Alba  
Ms. Jeraldine Baggett  
Ms. Dianne Belk and Mr. Larry Calder  
Mr. and Mrs. Bob Benac  
Ms. Linda M. Bonnett  
Charla, Celina, and Richard Burchett  
Melissa and Chris Burtless  
Ms. Carol Butera  
Mr. and Mrs. Ronald Cardamone  
Ms. Grace Carlson  
Dr. and Mrs. Thomas Carrasquillo  
Ms. Diana Davis  
Ms. Deb Deacetis  
Mr. and Mrs. L. Victor Desguin  
Mr and Mrs. James Disher  
Ms. Elayne Dorsey  
Mr. and Mrs. Michael Ezzell  
Ms. Suellen R. Field  
Mrs. Barbara Ford-Coates

Mr. and Mrs. Peter Forkgen  
Mr. Larry Geimer, CPA, PA  
Ms. Linda Getzen  
Mr. Richard Gonnering  
Gulf Coast Community Foundation  
of Venice  
Mrs. Terri Halbach  
P.J. Hayes of Tandem Construction  
Mr. and Mrs. F. Thomas Hopkins  
Mr. and Mrs. Ricky C. Horne  
Mr. and Mrs. Peter Hosmer  
Mr. and Mrs. William Humphrey  
Ms. Sharen Kerber  
Mr. and Mrs. Donald Kessel  
Dr. and Mrs. Robert King  
Mr. and Mrs. William Mahaney  
Ms. Debbie McDowell-Tate  
Mrs. Nancy Moss  
Mr. and Mrs. Vernon Peeples

Mrs. Alisa Peters  
Mr. Bart Tryon and Ms. Julie Taylor  
Mr. and Mrs. Al Purmort  
Ms. Susan Ratcliff  
Mr. and Mrs. James Ritchey  
Mr. and Mrs. Jack Robine  
Sterling and Jenny Ronk  
Ms. Fran Sadlo  
Ms. Peggy Simone  
Mrs. Phyllis Siskel  
Mrs. Carol K. Spalding  
Mr. and Mrs. Greg Stewart  
Ms. Susan R. Stewart  
Ms. Patricia Thomas  
Mrs. Betty J. Webb  
William G. and Marie Selby Foundation  
Dr. and Mrs. Art Young  
Mr. and Mrs. Ralph Zimmerman  
Ms. Patricia Zuzolo

# Family Support Plan Donations

Mr. and Mrs. Ulysses Alcantara ♦ Mr. Dennis Alvaro and Mrs. Christie Alvaro ♦ Mrs. Renee Armstrong  
Mrs. Linda Avis ♦ Mrs. Susan Barrett Hecker & Mr. Dave Hecker ♦ Ms. Elaine Barker ♦ Mr. and Mrs. Randolph Berger  
Mrs. Yvonne Berger ♦ Mr. and Mrs. Daniel W. Berish ♦ Mrs. Mary Berndt ♦ Ms. Debra Blake  
Mrs. Theresa Boland-McKenna ♦ Mr. and Mrs. William Bonner ♦ Ms. Anna Borchers ♦ Ms. Cynthia Boyd  
Ms. Shirley Bracero ♦ Ms. Phyllis W. Breeden ♦ Mr. and Mrs. Thomas Bursik  
Mr. Craig Cappello and Mrs. Elizabeth Cappello ♦ Mr. and Ms. Carter ♦ Ms. Susan L. Cekuta ♦ Mr. and Mrs. Bill Cioffi  
Mr. Dennis Cooley and Mrs. Amylynn Cooley ♦ Mr. and Mrs. Barry Cotton ♦ Ms. Susan Crawford  
Mr. and Mrs. Tom Cruce ♦ Mr. and Mrs. David F. Cuadra ♦ Ms. Amy Daccursio ♦ Ms. Patricia Davies  
Mrs. Langley Dean ♦ Mrs. Cyndie DeBlock ♦ Ms. Sue De Loach ♦ Mr. and Mrs. Carlos De Quesada  
Ms. Kristine Dittmann ♦ Mr. and Mrs. Daniel Downey ♦ Ms. Abbey Drew ♦ Mr. and Mrs. Pace Edwards ♦ Ms.  
Lavonne L. Ellis ♦ Ms. Theresa Etchison ♦ Mr. and Mrs. Jack Farina ♦ Ms. Elsa Feikert ♦ Mrs. Catherine Feminella  
Mrs. Sandra Ferris ♦ Mr. Steven Floto and Mrs. Sandra Floto ♦ Mrs. Julia O. Forkgen ♦ Ms. Angela Fracalossi  
Mr. and Mrs. Scott Franz ♦ Mrs. Tommi Frearson ♦ Mr. Don Fuchs and Mrs. Trisha Fuchs ♦ Mrs. Arsie Fusco  
Ms. Lynne Gallagher ♦ Mr. and Mrs. Les A. Gibson ♦ Ms. Cathleen Gillies ♦ Mr. and Mrs. Ryan M. Gobiel  
Mr. and Mrs. Brian Goldberg ♦ Mr. Don Gourlay and Mrs. Tara Gourlay ♦ Ms. Patricia Granitz  
Mr. and Mrs. Tom Grattenthaler ♦ Mr. and Mrs. Frank Gray, Jr. ♦ Mr. Landon Greaves and Mrs. Lori Greaves  
Mrs. Rena Greenberg ♦ Mrs. Martina Griffin ♦ Mr. and Mrs. Kenneth Grozier ♦ Mr. and Mrs. Rick Guajardo  
Mr. and Mrs. Atilano Guerrero ♦ Mr. Pete Haight and Mrs. Ginny Haight ♦ Mrs. Karla Hale ♦ Mr. and Mrs. Paul Hanleck  
Mrs. Tracy Hansen ♦ Ms. Laurie Harris ♦ Ms. Seryna Haun ♦ Ms. Karen Hill ♦ Mrs. Grace Hood  
Ms. Catherine Hook-Shea ♦ Mrs. Tracy Huston ♦ Mr. and Mrs. Randal Illig ♦ Dr. Kelley P. Johnson  
Mr. Steve Johnston and Mrs. Barbara Johnston ♦ Ms. Rhonda Kaithern ♦ Mrs. Christine Klopfer ♦ Ms. Polly Kopituk  
Mrs. Kozikowski ♦ Mr. and Mrs. James S. Kraut ♦ Mr. and Mrs. C. Oliver Kyte ♦ Mr. James Lance and Mrs. Lori Lance  
Mrs. Rayne Lanzing ♦ Mr. and Ms. Wayne Lea ♦ Mr. Harold Leboeuf and Mrs. Jackie Leboeuf ♦ Mrs. Cindy L. Lee  
Mr. and Mrs. Joseph Legiec ♦ Mrs. Raquel Lima ♦ Mrs. Jennifer Loche ♦ Mr. Douglas J. Lofgren ♦ Ms. Claudia Lopez  
Ms. Michelle Luck ♦ Mrs. Tami Maneovitch ♦ Mr. and Mrs. Anthony Marino ♦ Ms. Angela Martin ♦ Mr. David Matta  
Mrs. Michelle Maxwell ♦ Ms. Karen McCormack ♦ Mr. and Mrs. Michael McVey ♦ Mr. Edward H. Mench  
Mrs. Angela Miguel ♦ Mrs. Tracy Millis ♦ Mr. and Mrs. David Mitzel ♦ Ms. Bridget Mobley ♦ Mr. Mark Morgan  
Ms. Dawn Murcia ♦ Mr. Kevin Murdoch and Mrs. Andrea Murdoch ♦ Mrs. Lisa Murphy ♦ Mr. and Mrs. D.J. Myers  
Ms. Linda O'Connor ♦ Mr. Daniel Oliva and Ms. Nichole Sobr ♦ Mr. and Mrs. Matthew St. Onge  
Mrs. Barbara Panellino ♦ Dr. and Mrs. Rohit L. Pankhaniya ♦ Mr. Mark Parrish and Mrs. Nancy Parrish  
Mr. Alex Perez ♦ Ms. Cherie Picerno ♦ Mr. and Mrs. Chuck Pinkney ♦ Ms. Christina Pitchford-Perez ♦ Ms. Irene Plank  
Ms. Lisa Palso ♦ Ms. Dana Ponder ♦ Mr. and Mrs. Matt Ponzio ♦ Mr. and Mrs. Patrick Poplawski ♦ Ms. G. Angie Portelli  
Ms. Sharon Potter ♦ Ms. Valerie Powell-Stafford ♦ Ms. Lisa Radno ♦ Mrs. Carmen (Kary) Rendon  
Mr. and Mrs. Bill Robinson ♦ Mrs. Julie A. Romeo-Morrison ♦ Mr. and Mrs. Ramchan Samuel  
Dr. Eulogio Sanchez and Mrs. Mirella Sanchez ♦ Ms. Nannette Santrock ♦ Mr. and Mrs. John Scharlacken  
Mr. Eric Schultz and Mrs. Cristina Schultz ♦ Mr. Kenneth Scott ♦ Mr. Calvin Scudder ♦ Mr. Jacob Serna  
Ms. Kathy Shafran ♦ Mr. and Mrs. Dave Shoemaker ♦ Ms. Michelle Silva ♦ Mrs. Stacy Smith  
Mr. David Spicer and Mrs. Gina Spicer ♦ Mr. and Mrs. Charles Springer ♦ Ms. Rebecca Staples ♦ Mrs. Lori Stelzer  
Mr. and Mrs. Blake Steuber ♦ Mrs. Lisa Stone ♦ Mr. Justin Sullivan ♦ Mr. and Mrs. Darren L. Swain  
Mr. and Mrs. Daniel Swanson ♦ Ms. Alysia Taylor ♦ Ms. Cindy Tiranayake ♦ Mrs. Christine A. Trant  
Mr. and Mrs. Nicholas Trevisani ♦ Troop 344 ♦ Troop 604 ♦ Mr. and Mrs. Lon C. Turner ♦ Ms. Amy Ulman  
Mr. and Mrs. Keith Upson ♦ Mrs. Karla J. Van Beek ♦ Mr. and Mrs. Stephen Walker ♦ Mrs. Marion Waltz  
Ms. Wendy J. Warner ♦ Mr. and Mrs. Robert Webster ♦ Mr. and Mrs. Henry Weeks ♦ Mr. and Mrs. Steve Wenke  
Mrs. Kristen Widunas ♦ Mr. and Mrs. Stephen Walker ♦ Mr. and Mrs. Raymond Wozniak ♦ Ms. Jennifer D. Young  
Mrs. Yvonne Zacccone ♦ Mrs. Mary K. Zimmerman ♦ Mrs. Paula A. Zuluaga and Mr. Jose Terrero

## Troops that Participated in the Family Support Plan

**Charlotte 11**  
433 • 455 • 510 • 854 • 2010

**Charlotte 12**  
208

**Collier 11**  
26 • 44 • 148 • 293 • 652

**Collier 12**  
114 • 174 • 454 • 563 • 615 • 758

**Collier 13**  
534 • 557 • 655 • 772 • 825

**Desoto**  
83 • 777

**Hendry/Glades**  
344 • 566

**Highlands**  
524

**Lee 11**  
226 • 735 • 2137

**Lee 12**  
245 • 246 • 531 • 567 • 709

**Lee 13**  
34 • 47 • 58 • 131 • 154 • 161 • 339  
340 • 347 • 377 • 432 • 556 • 569  
571 • 632 • 698 • 727 • 755 • 767

**Lee 14**  
1 • 70 • 178 • 212 • 373 • 421 • 517  
648 • 746 • 806 • 822 • 858 • 2007

**Manatee 1**  
11, 113

**Manatee 3**  
74 • 361 • 2022

**Manatee 4**  
6 • 136 • 461 • 474 • 515 • 604 • 728  
736 • 781 • 784 • 811 • 812

**Manatee 5**  
4 • 37 • 71 • 72 • 105 • 206 • 316 • 320  
480 • 572 • 683 • 741 • 788 • 792  
851 • 920 • 954 • 2854

**Sarasota 11**  
7 • 63 • 79 • 121 • 170 • 172 • 173 • 249  
255 • 296 • 302 • 303 • 381 • 600  
678 • 722 • 729 • 780

**Sarasota 12**  
3 • 28 • 188 • 189 • 254 • 272 • 489  
506 • 626 • 795 • 849

**Sarasota 14**  
29 • 59 • 250 • 286 • 749 • 865

**Sarasota 15**  
62 • 85 • 163 • 343 • 445 • 625 • 676  
715 • 751 • 782 • 848

# Collaborations

Girl Scouting would not be possible without the collaborative efforts of not-for-profit groups, civic organizations, and corporations who worked in partnership with Girl Scouts of Gulfcoast Florida, Inc. to provide girls with outstanding and contemporary programs.

4 Freedoms Park  
Abel Elementary School  
ACT  
Adult and Community Education  
All Faiths Food Bank  
Aloha Angels Children's Center  
Alta Vista Elementary  
Alva Community Park  
Alva Elementary School  
Alvin A. Dubin Alzheimer's Resource Center  
American Red Cross - Charlotte County Chapter  
American Red Cross - Collier County Chapter  
American Red Cross - Lee County Chapter  
American Red Cross - Manatee County Chapter  
American Red Cross - Polk County Chapter  
American Red Cross - Southwest Florida Chapter  
American Sewing Guild  
AMI Kids Infinity Middle  
Anthony Park  
Ashton Elementary School  
Auto Quest  
Bay Oaks Recreation Center  
Blackburn Elementary School  
Bonita Springs Elementary School  
Bonita Springs YMCA  
Booker Middle School  
Boy Scouts of America Southwest Florida Council  
Boys and Girls Clubs of Charlotte County  
Boys and Girls Club at Pueblo Bonito  
Boys and Girls Club at the STARS Complex  
Boys and Girls Club of Collier County  
Braden River Middle School  
Bradenton Boys and Girls Club  
Bradenton YMCA  
Broadway Palm Dinner Theatre  
Caloosa Elementary  
Caloosa Middle School  
Calusa Nature Center and Planetarium  
Calusa Park Elementary School  
Sunrise/Sunset Program  
Cape Coral Hospital  
Cape Coral YMCA @ First United Methodist  
Carlson Memorial Methodist Church  
Catholic Charities of Bonita Springs at St. Leo's  
Char-O-Lot Ranch  
Charlotte County Family YMCA  
Christa McAuliffe Charter Elementary School  
City of Naples Natural Resources Dept.  
City of North Port  
Collier County Housing Authority  
Collier County Public Schools  
Collier County School Board  
Transportation - Immokalee Depot  
Collier Mosquito Control District  
Colonial Elementary  
Community Cooperative Ministries  
Community Youth Development (CYD)  
Corkscrew Elementary School  
Cultural Center of Charlotte County, Inc.  
Cypress Lake Presbyterian  
Daughtery Elementary School  
Department of Juvenile Justice  
DeSoto Boys and Girls Club  
Diplomat Middle School  
Division of Forestry - Caloosahatchee District  
Dr. Carrie D. Robinson Littleton Elementary School  
East Naples Community Park  
Eastside Elementary School  
Eden Park Elementary School  
Edison College  
Edison Ford Estates

Englewood Elementary School  
Estero Recreation Center  
FAMILY MAGAZINE, INC.  
First Presbyterian Church  
First United Methodist Church of Clewiston  
First United Methodist Church of Moore Haven  
Fort Myers YMCA at First Baptist  
Franklin Park Elementary School  
Fruitville Elementary School  
Garden Elementary School  
Gateway Trinity Church  
Generation Skating Rink  
Getaway Marina  
Girls Inc.  
Glades County School Board  
Gocio Elementary School  
Golden Terrace Elementary School  
Goodwill Industries of Southwest Florida  
Grace Community School  
Guadalupe Family Center  
Guardian Angel Day Care Center  
Gulfgate Elementary  
Gymnastics World  
Hardee County School Board  
Harold Avenue Recreation Center  
Harry Chapin Food Bank of Southwest Florida  
Harvest Academy  
Hector A. Cafferata, Jr. Elementary School  
Heights Elementary School  
Hendry County Schools  
Highlands Elementary School  
Imaginarium  
Immokalee Community Park  
Immokalee Community School  
Immokalee Housing and Family Services  
J. Colin English Elementary  
Johnson Middle School  
Junior Achievement  
Just For Girls  
Kinnan Elementary School  
Lake Park Elementary School  
Lake Placid Elementary  
Lake Placid High School  
Lake Placid Middle School  
Lake Trafford Elementary School  
Laurel Civic Association  
Laurel Oak Elementary School  
Learning and Families  
Lee Charter Academy  
Lee County Parks and  
Recreation - Alva Community Center  
Lee County Parks and Recreation - Schandler Hall  
Lee County School System  
Lee Wetherington Boys & Girls Club  
Manatee County School Board  
Manatee Elementary School  
Marco Island YMCA  
Marauders Baseball  
Max Hassee Community Park  
Miracle Baseball  
Mote Marine Laboratory & Aquarium  
Mount Hermon School  
N. Ft. Myers Academy for the Arts  
Naples Zoo at Caribbean Gardens  
New Operation Cooper Street  
Newtown Estates Recreation Center  
North Ft. Myers Community Park  
North Port Boys and Girls Club  
North Port Library  
Oasis Elementary School  
Oneco Elementary School

Orange River Elementary School  
Orangetown Elementary School  
Osceola Elementary School  
PACE Center for Girls, Inc., Ft. Myers  
PACE Center for Girls, Inc., Bradenton  
Paint Misbehavin'  
Palmetto Boys and Girls Club  
Paul Laurence Dunbar Middle School  
Phillippi Shores Elementary  
Providence Academy  
Pine View School  
Pincrest Elementary School  
Pinewoods Elementary School  
Providence Equestrian Center  
Pump it Up  
Quality Life Academy  
Rasmussen College  
Ray Patorff Elementary  
Red Cross Shelter at Estero Rec Center  
Ringling College of Art and Design  
River Park Community Center  
Riverdale Christian Academy  
Riverdale High School  
Robert Taylor Community Center  
Roger Garden Elementary  
Roy McBean Boys and Girls Club  
Sabal Palm Elementary School  
Samoset Elementary School  
Sarasota County School Board  
School Board of Charlotte County  
School Board of Highlands County  
School District of DeSoto County  
Sebring Middle School  
Shady Oaks Community Center  
Shell Point  
Skyline Elementary School Extended Care Program  
South County Regional Recreation Center  
South Florida Community College  
Southside Elementary  
Southwest Florida Juvenile Detention Center  
Spring Creek Elementary School  
St. Leo's Catholic Church  
State Resource Center  
Stone Crabs Baseball  
Suncoast Communities Blood Bank  
Suncoast School for Innovative Studies  
Sunshine Elementary School  
Tabernacle School  
Tallevast Community Center  
Tanglewood Elementary School  
Taylor Ranch Elementary School  
Teen Pregnancy Prevention Alliance  
The Bailey-Matthews Museum  
Three Oaks Elementary school  
Tice Elementary School  
Trafalgar Elementary School  
Tropic Isles Elementary  
Tuttle Elementary  
United Way House at Cape Coral  
Venice Boys and Girls Club  
Venice YMCA  
Veterans' Community Park  
Village Oaks Elementary School  
Wakahatchee Recreation Center  
Westside Elementary School  
Wilkinson Elementary  
William Austin Recreation Center  
Williams Elementary School  
Willis Elementary School  
Zonta Club of Bonita Springs



Girl Scouts of Gulfcoast Florida, Inc. is proud to be a United Way member agency and appreciates the support of the following United Ways: Manatee; Central Florida (Hardee and Highlands); Sarasota (DeSoto); South Sarasota; Charlotte; Lee, Hendry, and Glades; and Collier.



# girl scouts 1912-2012

## Girl Scouts of Gulfcoast Florida, Inc.

4780 Cattlemen Road  
Sarasota Florida, 34231  
941-921-5358 or 800-232-4475  
[www.gsgcf.org](http://www.gsgcf.org)

## Board of Directors

### Officers of the Board of Directors:

President, Linda Getzen - North Central Region  
First Vice President, Ann Carrasquillo - South Central Region  
Second Vice President, Cecelia Hill - Central Region  
Treasurer, Nancy Gorski - North Central Region  
Secretary, Beverly Duff - South Central Region  
CEO, Susan Stewart

### Board Members - Northern Region

Betsy Benac (Sarasota)  
Rae Dowling (Bradenton)  
Carolyn Griffin (Bradenton)  
Christine B. Yekel (Bradenton)

### Board Members - Eastern Region

Sophia Peavy (Wauchula)

### Board Members - North Central Region

Francine Brown (Sarasota)  
Richard Cyphers (Sarasota)  
Patricia Mahaney (Venice)

### Board Members - Central Region

Mary Disher (Port Charlotte)  
Patricia Weston (Port Charlotte)  
Patricia Zuzolo (Port Charlotte)

### Board Members - South Central Region

Rock Aboujaoudé (Alva)  
Reneé Armstrong (Cape Coral)  
Megan Shepherd (Clewiston)

### Board Members - Southern Region

David Alleman (Naples)  
Barbara Church (Naples)  
Bonny Eads Dery (Naples)  
Shane McIntosh (Naples)

### Board Development Committee

Reneé Armstrong - South Central Region  
Barbara Church - Southern Region  
Rae Dowling (Chair) - Northern Region  
Francina Hollaway - North Central Region  
Johnette Isham - North Central Region  
Antonio Perez - South Central Region  
David Rolls - South Central Region

### Girl Representatives

Dianne Kaiyoorawongs - North Central Region  
Stevie Peacock - North Central Region

