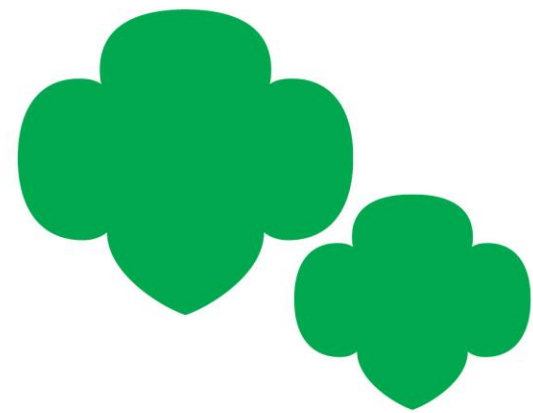


What is the purpose
of the
Volunteer Service
Delivery Structure?

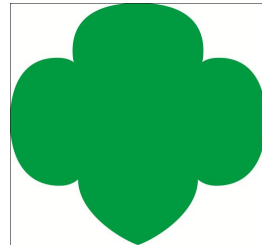


Support *all*
Volunteers with the delivery of
the Girl Scout Leadership
Experience through all
Pathways



Northern Region

Kim Cooper & Leslie Roscoe



North Central Region

Deb Deacitus



Eastern Region

Amy Texley



South Central Region

Chris Trant



Central Region

Rhonda Harvey



Southern Region

Anna Braun



Amanda Jacob
Director,
Volunteer Management



Debbie McDowell-Tate
Chief Operating Officer



Julia Onnie-Hay
Innovative Program Specialist



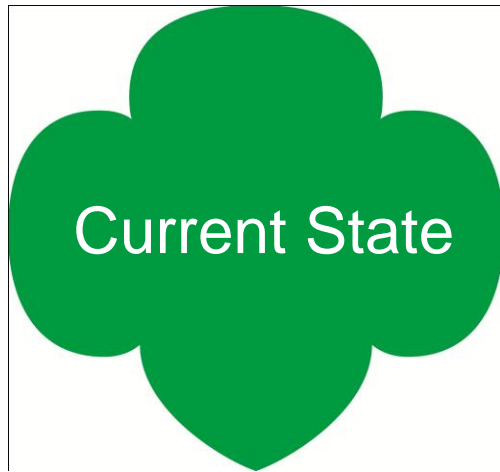
GSUSA Research

- American Red Cross
- Boy Scouts of America
- Coalition for the Homeless
- Girls, Inc.
- Habitat for Humanity
- iMentor
- Jumpstart for Young Children
- Junior Achievement
- Memorial Sloan Kettering Hospital
- Move On
- New York Cares
- Points of Light Foundation
- Saddleback Church
- SeniorCorps/AmeriCorps
- Susan G. Komen Foundation



Survey Results

- **Fewer meetings**
- **Email us what you can email us**
- **Take things back to their troops**
- **Network with other volunteers**
- **“Filled Up”**
- **Welcomed and more hospitality**
- **HAVE FUN!!!**

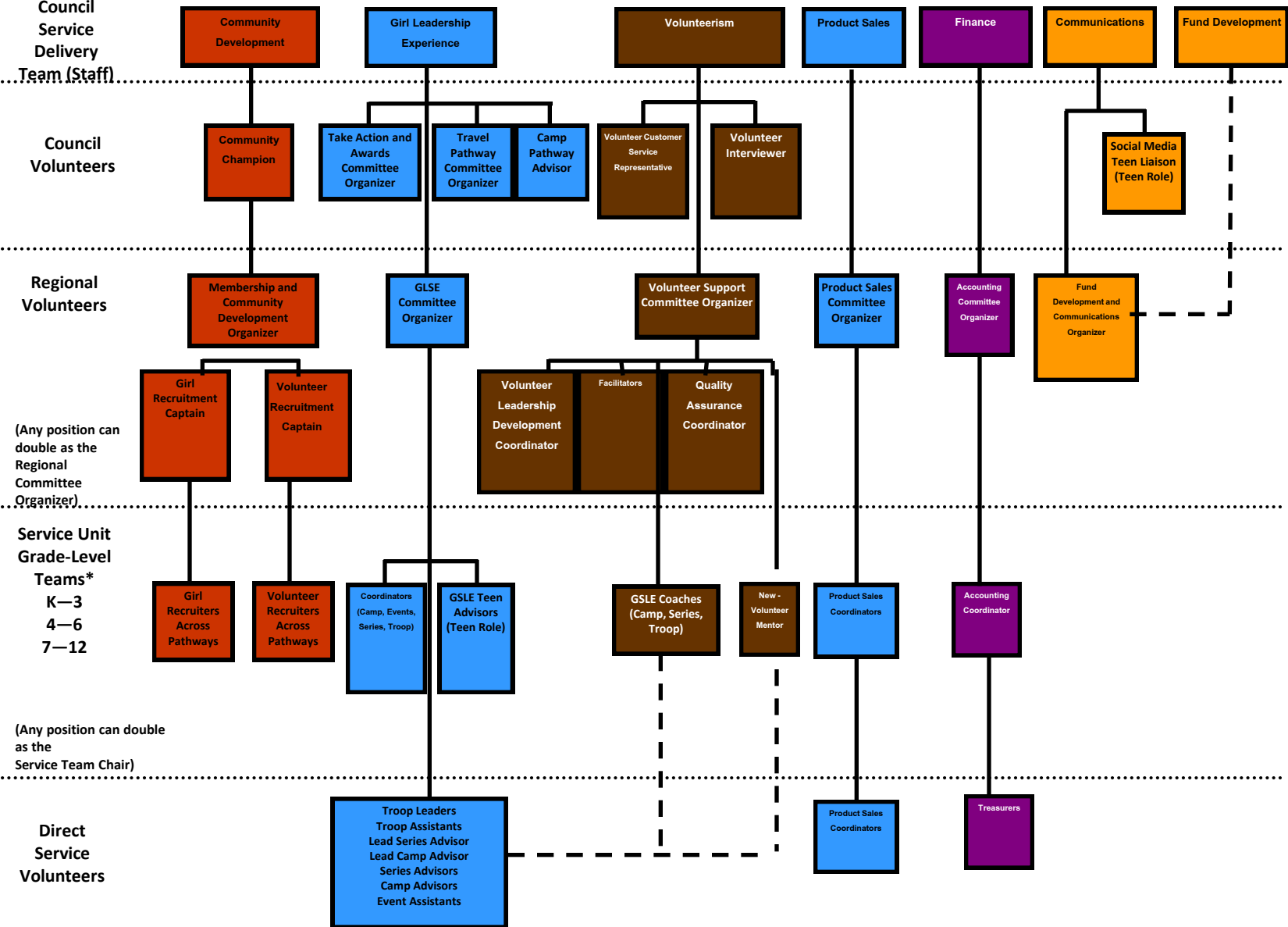


- **Service unit teams establishes troops**
- **Service unit meeting is primary method of communication and support to volunteers**
- **Girls in troops sell cookies**

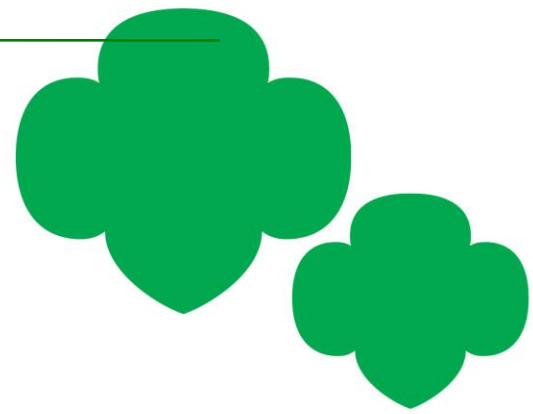


- **We need to offer multiple pathways for girls and volunteers to participate in the SU**
- **We need to better use volunteers' time and offer additional options for receiving information and communicating**
- **We need to support all girls in all pathways selling cookies**

Volunteer Service Delivery Structure



Where do we go from here?



- Position summaries and descriptions are on the membership table for review
- Service Unit roll out over the next year
- Recruit/place volunteers

